



ON OUTRIGGERS FULLY EXTENDED - 360°

Radius in Feet	Main Boom Length in Feet					25 ft Est. & 70 ft
	27	40	50	60	70	
8	44,000 (84)	43,650 (73)	42,450 (76.5)			
9	41,000 (61.5)	41,000 (71.5)	39,850 (75.5)			See Warning Note 17
10	38,050 (59)	38,000 (70)	37,550 (74)			
12	31,450 (54)	31,450 (66.5)	31,450 (71.5)	31,450 (75.5)		
15	24,300 (45)	24,300 (61.5)	24,300 (68)	24,300 (72)	22,000 (76.5)	
20	18,000 (23)	17,650 (52.5)	17,650 (61.5)	17,650 (67)	17,650 (72)	12,500 (78)
25		13,300 (42)	13,300 (54.5)	13,300 (61.5)	13,300 (67)	10,750 (74.5)
30	See Warning Note 16	10,400 (28.5)	10,400 (46.5)	10,400 (55.5)	10,400 (62.5)	9,810 (71)
35			8,370 (37.5)	8,370 (49.5)	8,370 (57.5)	8,930 (67.5)
40			6,630 (25)	6,630 (42.5)	6,630 (52)	7,820 (64)
45				5,370 (34)	5,370 (46)	6,210 (60.5)
50				4,410 (23.5)	4,410 (39.5)	5,040 (57)
55					3,860 (31.5)	4,140 (52.5)
60					3,060 (21.5)	3,430 (48.5)
65						2,860 (44)
Min. boom angle (deg.) for indicated length (No load)						0
Max. boom length (ft.) at 0 deg. boom angle (No Load)						70
						95

NOTE: Boom angles are in degrees. AG-829-002752 & -008253

GENERAL:

1. Rated loads as shown on capacity chart pertain to this crane as modified to the crane or use of optional equipment other than its capacity. Use only the jib or boom extension supplied with this crane without the written approval of Grove Mfg. Co.
2. Construction equipment can be hazardous if improperly operated and shall be in compliance with the information in the Operator's and Manuals supplied with this crane. If these manuals are missing, order them.
3. The operator and other personnel associated with this crane shall be trained in accordance with applicable American National Standards Institute (ANSI) Safety Standards.

SETUP:

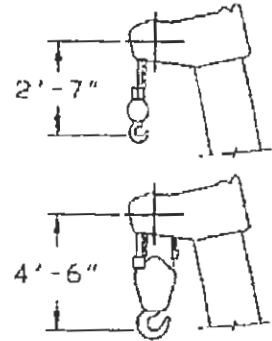
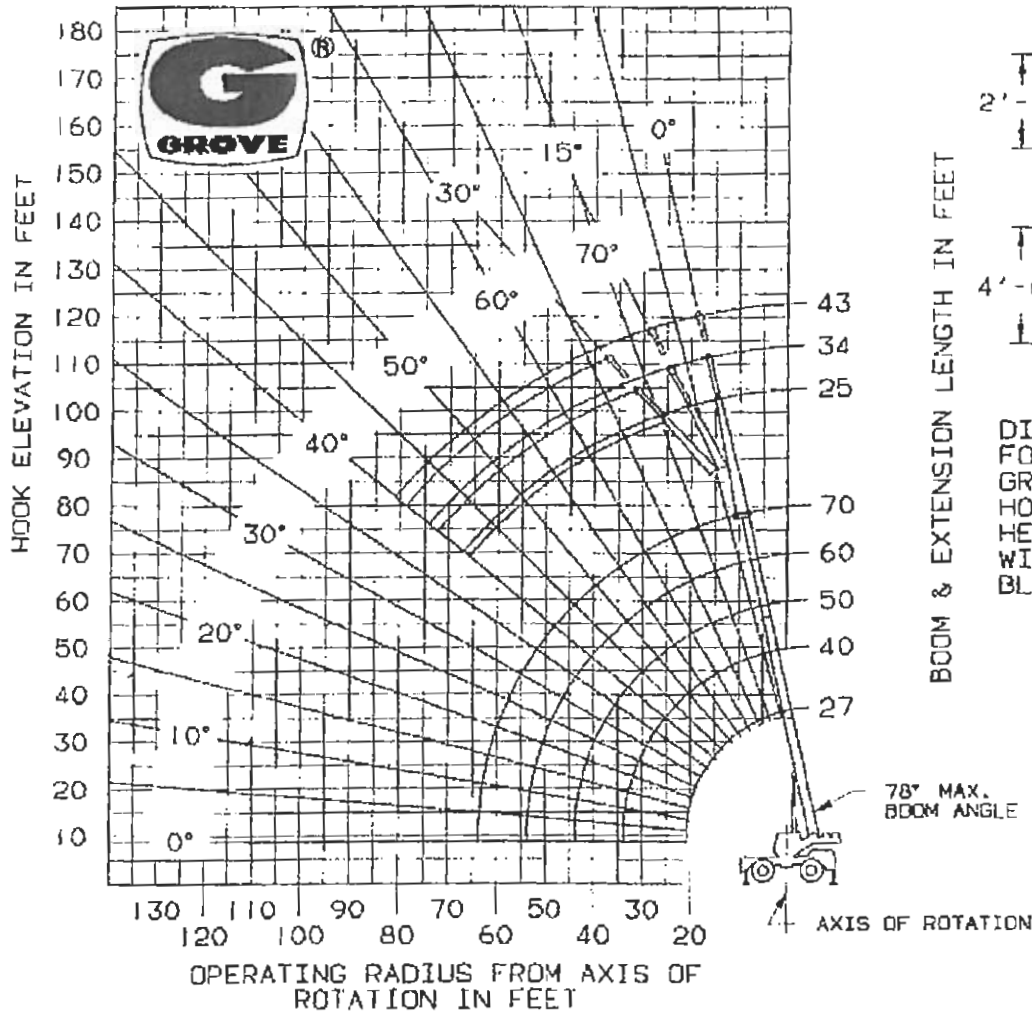
1. The crane shall be leveled on a firm supporting surface. Depending on the crane, it may be necessary to have structural supports or sufficient strength to spread the load to a larger bearing surface.
2. For outrigger operation, outriggers shall be fully extended with the boom or lifting loads.
3. When equipped with front jack cylinder, the front jack cylinder shall be fully extended.
4. When equipped with extendable counterweight, the counterweight tires shall be inflated to the recommended pressure before lifting any load.
5. With certain boom and hoist tackle combinations, maximum capacity shall be limited by cable lengths.
6. Rotation resistant wire rope is best suited for single line lifting applications. Consult the manufacturer for specific recommendations concerning multiple part lines.
7. Do not transport crane with boom extension or jib erected.

OPERATION:

1. Rated loads at rated radius shall not be exceeded. Do not lift the maximum rated load at rated radius. Weight of load must not exceed 80% of rated lift capacity.
2. All rated loads have been tested to and meet minimum requirements of ASME B30.1-1999 (formerly B30.1-1985) and do not exceed the requirements of ASME B30.1-1999 (formerly B30.1-1985) and do not exceed the requirements of ASME B30.1-1999 (formerly B30.1-1985).
3. Rated loads include the weight of hook block, slings and auxiliary lift lines. Subtract the weight of hook block, slings and auxiliary lift lines from the listed ratings to obtain the net load which may be lifted.
4. Load ratings are based on freely suspended loads. No attempt shall be made to lift loads from the ground in any direction.
5. Rated loads do not account for wind on lifted load or boom. If it is necessary to lift in wind, rated loads and boom lengths be appropriately reduced.

GROVE® RT422

RANGE DIAGRAM



DIMENSIONS ARE FOR LARGEST GROVE FURNISHED HOOK BLOCK AND HEADACHE BALL, WITH ANTI-TWO BLOCK ACTIVATED.

WEIGHT REDUCTION FOR LOAD HANDLING DEVICES

26 ft. FIXED EXTENSION w/27 ft.-70 ft. BOOM	
†Stowed	- 294 lbs.
†Erected	- 1,471 lbs.
26 ft.-43 ft. TELE. BOOM EXTENSION w/27 ft.-70 ft. BOOM	
†Stowed	- 538 lbs.
†Erected (retracted)	- 3,906 lbs.
†Erected (extended)	- 4,895 lbs.

†Reduction of Main Boom Capacity.

HOOKBLOCKS:	
22 Ton, 3 Sheave 499 lbs.
16 Ton, 2 Sheave 462 lbs.
12 Ton, 1 Sheave 360 lbs.
5 Ton Headache Ball 172 lbs.
Auxiliary Boom Head 145 lbs.

NOTE: All load handling devices and boom attachments are considered part of the load and suitable allowances MUST BE MADE for their combined weights. Weights are for Grove furnished equipment.

Distributed by:



GROVE MANUFACTURING COMPANY

Division of
KIDDE

Box 21, Shady Grove, Pennsylvania 17256

Phone: 717-897-8121 Telex: 812308 GABN GROVE MFG

DATE 10/85-10M
Printed in U.S.A.