

Manitowoc 999

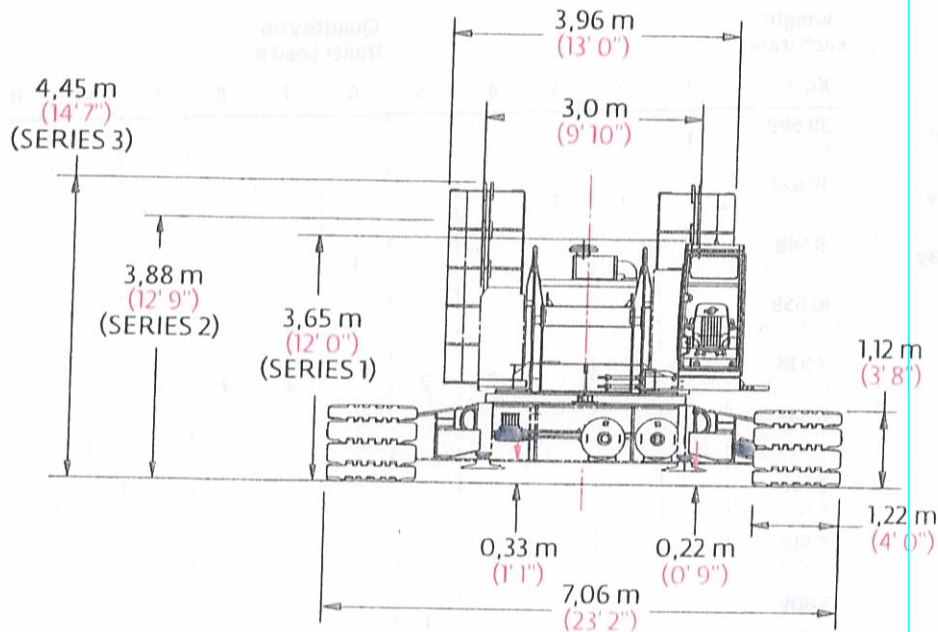
Product Guide



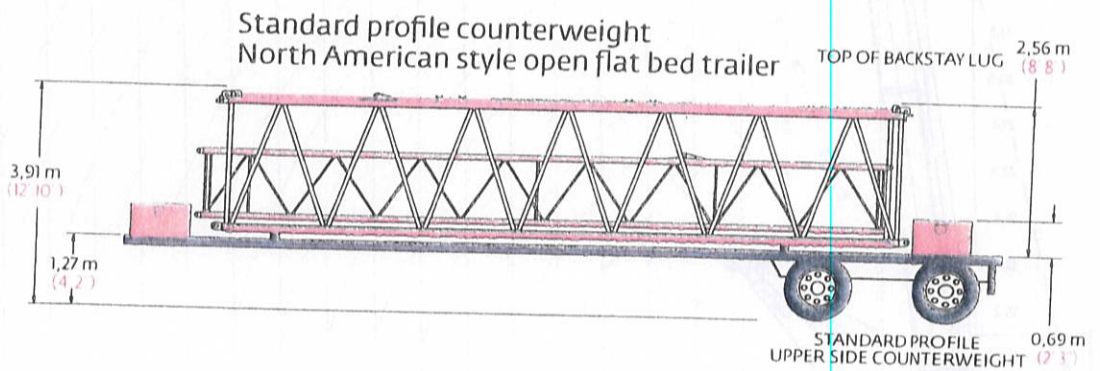
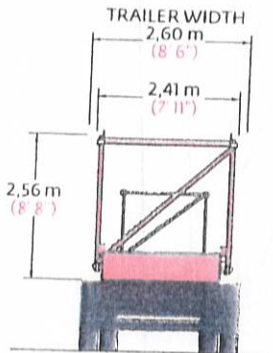
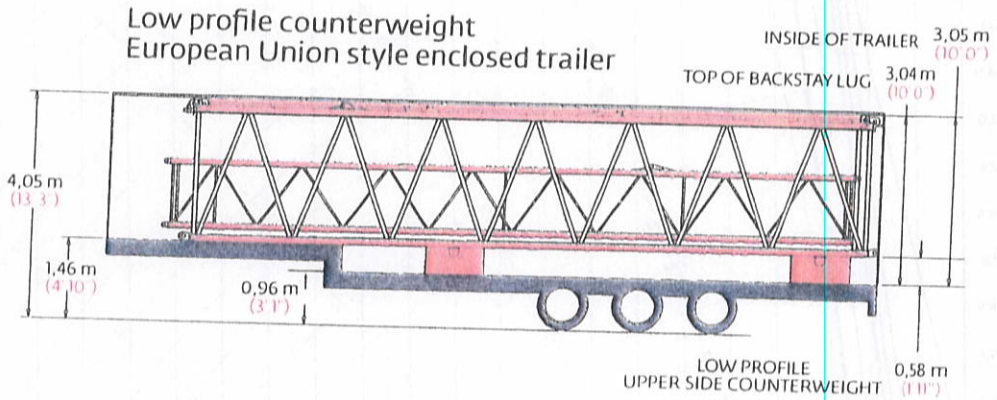
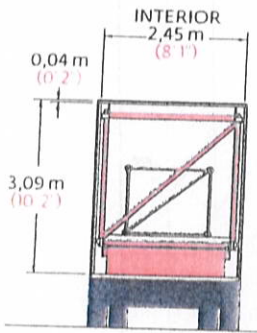
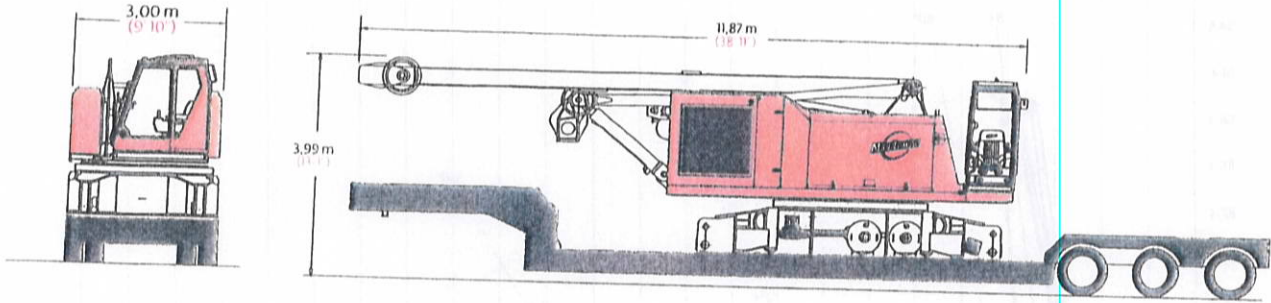
Features

- 250 t (275 USt) capacity
- 1 115 m-ton (8,268 ft-kips) maximum load moment
- 88,4 m (290 ft) heavy-lift boom
- 100,6 m (330 ft) fixed jib on heavy-lift boom
- 128,0 m (420 ft) luffing jib on heavy-lift boom

Outline dimensions



Transport data



Heavy-lift boom load charts

Liftcrane boom capacities - Series 3
Boom No. 82 or No. 22EL

Fixed Jib No. 134 on
Heavy-Lift Boom
No. 82 or No. 22EL

Boom m (ft) Radius	99 609 kg (219 600 lb) Upperworks Counterweight 360° Rating 36 288 kg (80 000 lb) Carbody Counterweight kg (lb) x1000												Jib Length m (ft)	Deduct from Capacity when fixed jib is attached kg (lb)	
	21,3 (70)	27,4 (90)	33,5 (110)	39,6 (130)	45,7 (150)	51,8 (170)	57,9 (190)	64,0 (210)	70,1 (230)	76,2 (250)	82,3 (270)	88,4 (290)			
4,6 (15)	250,0° (551 0)													9,1 (30)	1 220 (2 700)
5,0 (17)	219,9 (462 5)													12,2 (40)	1 590 (3 500)
6,0 (20)	183,0 (397 5)	180,7 (396 4)												15,2 (50)	1 950 (4 300)
8,0 (26)	139,0 (309 3)	138,5 (308 3)	138,1 (307 5)	133,2 (295 0)	120,1 (265 5)									18,3 (60)	2 310 (5 100)
10,0 (32)	111,5 (252 2)	111,1 (251 2)	110,8 (250 5)	110,5 (249 9)	110,6 (248 9)	100,8 (224 1)	88,6 (196 8)							21,3 (70)	2 770 (6 100)
11,0 (36)	100,2 (221 8)	100,3 (222 0)	100,4 (222 1)	100,3 (221 9)	99,9 (221 0)	97,6 (215 7)	86,3 (190 5)	76,7 (169 2)	63,1 (139 3)					24,4 (80)	3 220 (7 100)
12,0 (40)	88,2 (190 3)	88,3 (190 4)	88,3 (190 4)	88,3 (190 4)	88,2 (190 0)	88,3 (189 7)	81,4 (177 0)	74,9 (164 5)	62,8 (138 4)	51,8 (114 1)	— (95 1)				
14,0 (46)	70,9 (156 1)	70,9 (156 2)	70,9 (156 1)	70,9 (156 0)	70,6 (155 5)	70,5 (155 1)	70,3 (154 6)	67,9 (149 6)	62,1 (137 1)	51,2 (113 0)	42,6 (94 1)	35,3 (77 9)			
15,0 (50)	64,4 (139 0)	64,4 (139 0)	64,4 (138 9)	64,3 (138 8)	64,1 (138 3)	63,9 (137 9)	63,6 (137 3)	63,6 (136 7)	60,7 (132 5)	50,9 (112 2)	42,3 (93 3)	35,0 (77 2)			
18,0 (60)	50,1 (108 2)	50,1 (108 1)	50,0 (108 0)	49,9 (107 8)	49,6 (107 2)	49,5 (106 8)	49,1 (106 1)	48,9 (105 5)	48,6 (104 7)	48,2 (104 7)	41,5 (91 4)	34,3 (75 5)			
20,0 (80)		33,6 (72 6)	33,6 (72 5)	33,5 (72 3)	33,2 (71 7)	33,0 (71 2)	32,6 (70 4)	32,3 (69 8)	31,9 (68 9)	31,9 (68 9)	31,5 (68 0)	31,3 (67 2)			
30,0 (100)			24,4 (52 7)	24,3 (52 5)	24,1 (51 9)	23,8 (51 4)	23,5 (50 6)	23,1 (49 9)	22,7 (49 0)	22,7 (48 9)	22,3 (48 0)	21,9 (47 2)			
34,0 (110)			— (41 6)	20,2 (45 6)	19,9 (45 0)	19,7 (44 4)	19,3 (43 6)	19,0 (42 9)	18,6 (42 0)	18,6 (42 0)	18,1 (41 0)	17,7 (40 2)			
36,0 (120)				18,5 (39 8)	18,2 (39 2)	18,0 (38 7)	17,6 (37 9)	17,3 (37 2)	16,9 (36 3)	16,8 (36 2)	16,4 (35 3)	16,0 (34 5)			
40,0 (130)				— (30 9)	15,3 (34 5)	15,1 (34 0)	14,8 (33 2)	14,4 (32 4)	14,0 (31 6)	14,0 (31 5)	13,5 (30 5)	13,2 (29 7)			
42,0 (140)					13,9 (29 3)	13,9 (29 9)	13,5 (29 1)	13,2 (28 4)	12,8 (27 5)	12,8 (27 4)	12,3 (26 5)	12,0 (25 6)			
46,0 (150)					— (22 4)	11,7 (26 4)	11,5 (25 7)	11,1 (24 9)	10,7 (24 0)	10,7 (24 0)	10,2 (23 0)	9,8 (22 1)			
50,0 (160)						8,7 (21 4)	9,7 (22 6)	9,4 (21 9)	9,0 (21 0)	8,9 (20 9)	8,5 (20 0)	8,1 (19 1)			
52,0 (170)							8,5 (19 1)	8,6 (19 3)	8,2 (18 4)	8,2 (18 3)	7,8 (17 4)	7,4 (16 5)			
58,0 (190)								5,8 (13 0)	6,1 (13 6)	6,2 (13 9)	5,8 (12 9)	5,4 (12 1)			
64,0 (210)									3,4 (7 6)	4,1 (9 1)	3,9 (8 8)	3,8 (8 5)			
70,0 (230)										1,8 (4 1)	1,9 (4 2)	1,8 (4 0)			

NOTE: Special equipment required.

to ANSI B30.5 Requirements - Capacities do not exceed 75% of static tipping load.

NOTE: This capacity chart is for reference only and must not be used for lifting purposes.